

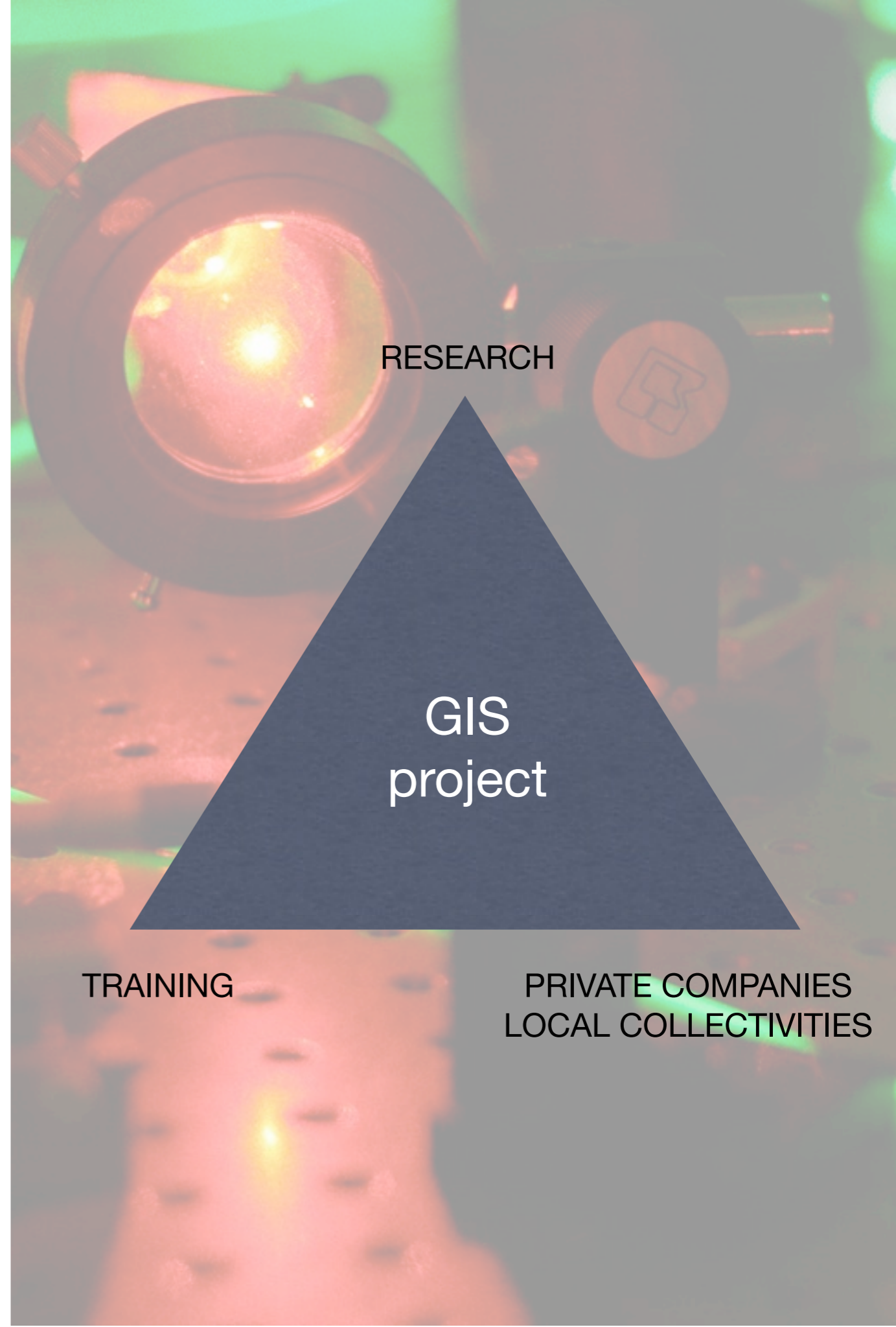
G.I.S. Risks  
the University Haute-Alsace

«Projects» unit  
The Faculty for Research, Development  
and Doctoral Training

# The surrounding of the project

---

The «GIS project» aims to gather the needs and expectations of the private companies and local collectivities, and to adapt the trainees given at the University Haute-Alsace (UHA), thanks to the results of our lab work.

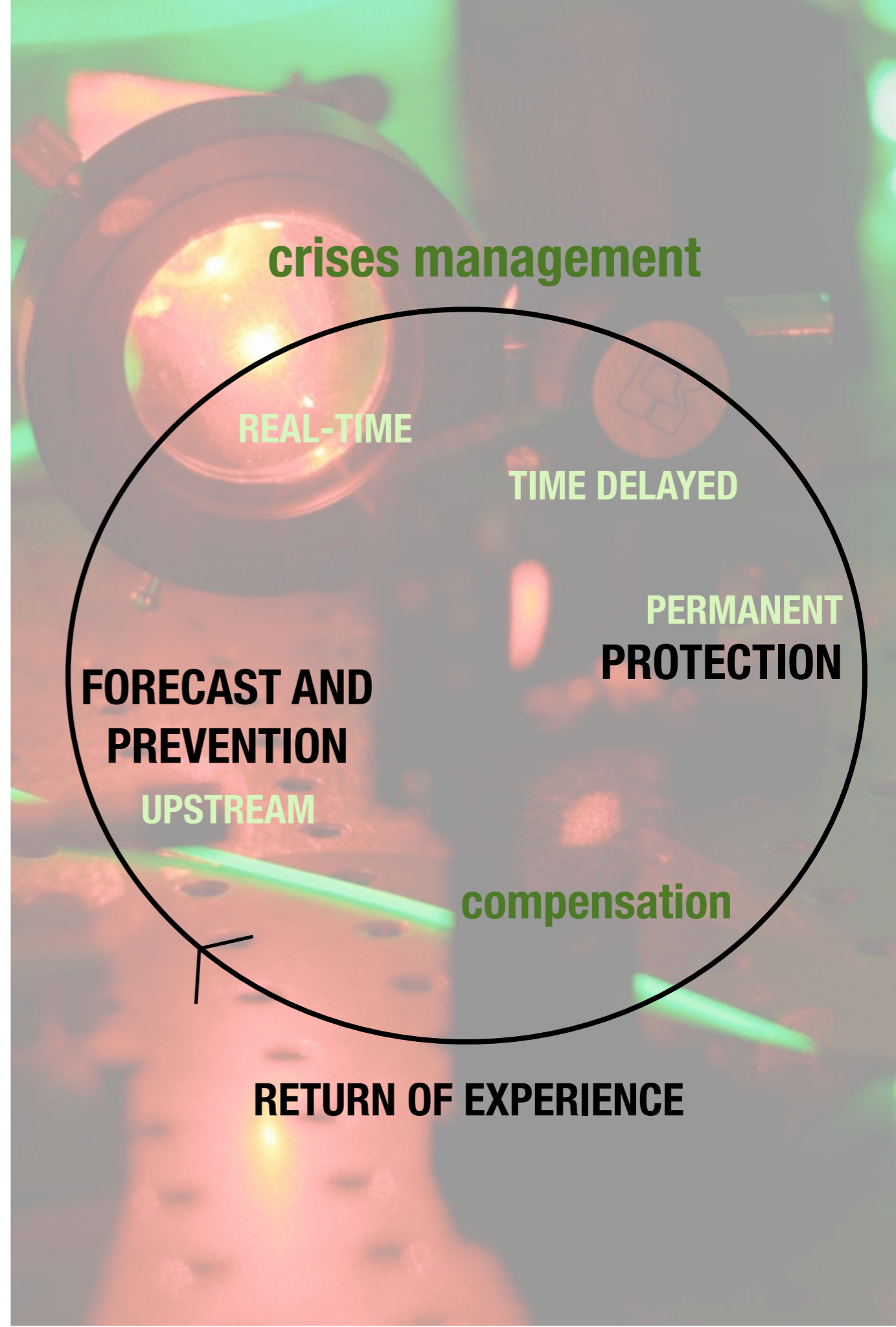


# Why the Risks Theme?

---

Both the Bachelot Law from July two thousand and three and the Grenelle of environment from 2007 have highlighted the need for preventive information and for a new governance to cover the requirements of major risks management.

Several labs of the UHA have a huge experience in this area. Therefore, the UHA has decided last July to create a tool adapted, multipurpose, evolutionary, and reactive.

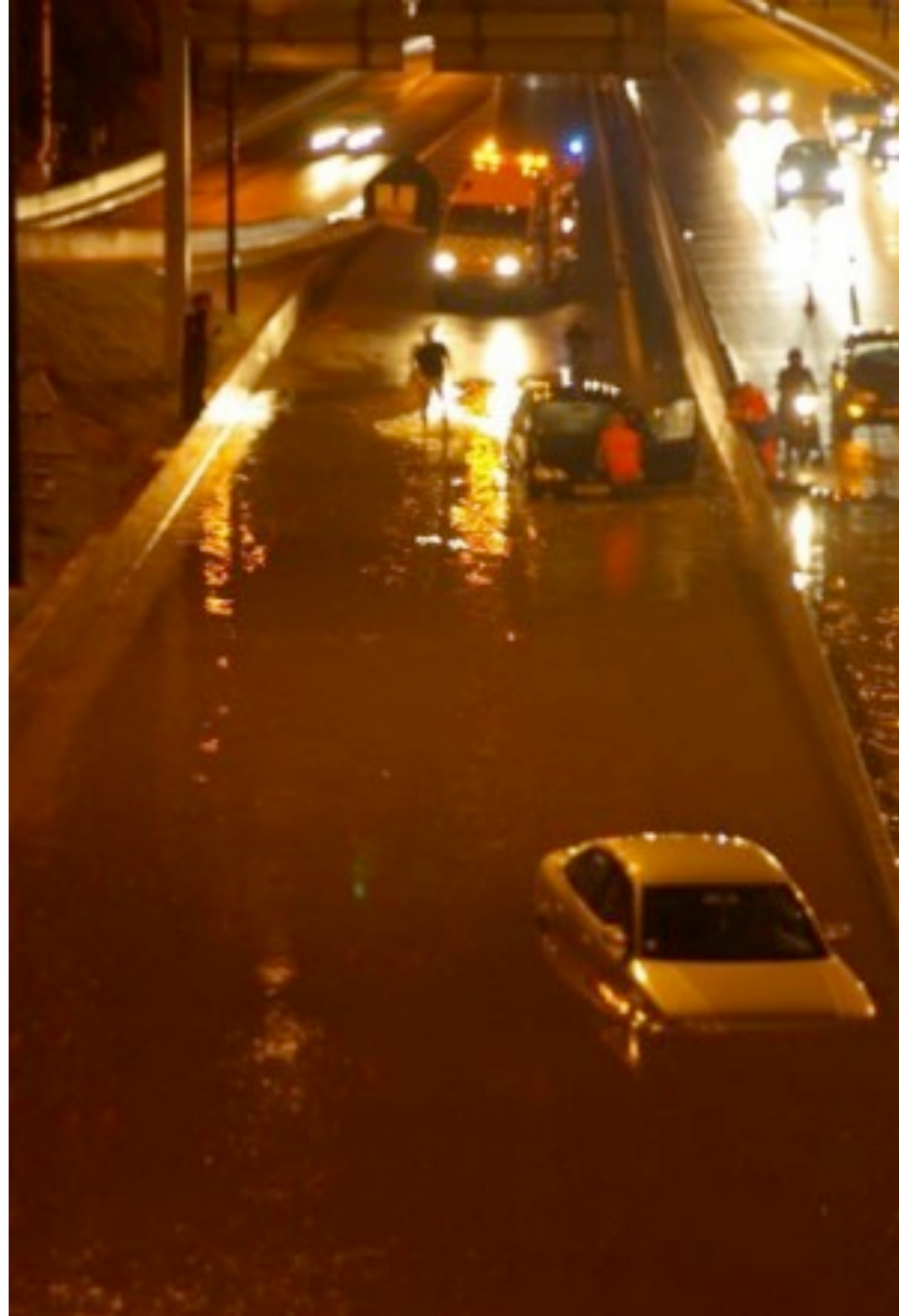


# Target of the project

---

The GIS mutualize the know-how and skills of all labs of the UHA, in order to take advantage of the high level of scientific and technological expertise.

The aim is to gather these expertise and make them available to the community.



# Results expected / Expectations

---

- **a territorial dynamic** based on the participation of all potential players having a multidisciplinary role in a same organization/campus
- **a critical size** for the trainees in terms of human potential and know-how
- **unifying initiatives** within our labs (events, financing of projects and so on)
- **a strong commitment from the politics around Risks** (Ministry of Higher education and research, territorial communities..)



---

As a sum up, the labs of UHA unified in the Risk GIS shall:

- Guarantee a targeted technology watch ;

- Acquire a multidisciplinary know-how to set up new technical and scientific trainees/courses specialized in Risks ;

- Answer to the needs of the civil society in expertise.



# The themes studied

---

## **We have 4 main axes:**

Chemical, Biological, Industrial and technological Risks;

Economical, financial and social Risks;

natural and environmental Risks;

Individual Risks.

## **As well as transverse themes , by setting up:**

**-a watch unit/Observatory:** a tool to understand and study the expectations and needs of the communities;

**-a watch tool** realized via a regional press review, archives, testimonies of elderly people, natural tracks and footprints.



# The «Risks GIS»

3 main steps

---

1. creation of the Risks GIS;
2. an opening to the cross border/  
transboundary and European countries;
3. an opening to the private and  
administrative environment/world.



# Target of the university

---

The main target for our university is to create an incubator of transverse research

How?

-By setting up a data base of the industrial players, political players, and labs of the UHA;

-By implementing a tool for technology watch, scientifically and technologically valid and performant/successful;

-By Initiating collaborative/crowd sourcing projects of innovative R&D, linked with the strategy defined by the users;

-By setting up a program of workshops, events, publications;

-By exchanging and sharing (return of experience) know-how to improve collective know-how, for example via the analyses and integration of experiences leaded across the borders, in Swiss and Germany.



# The legal status

---

The choice of the legal status is led by the need of a flexible structure.

- without moral individual responsibility

*but with :*

- a management adviser
- a scientific adviser
- a director

The university is mutualizing the financial and human resources together with public organization, private enterprises to realize programs (research, equipment management...).

Practically, the GIS is a contract of scientific collaboration. The Legal text of support is written and validated by all players of the GIS, for duration of 4 years.

